

CERTIFIED LAND CORNER RECORDATION

DESCRIPTION OF CORNER EVIDENCE FOUND, AND ORIGINAL RECORD (If known)

W 1/4 CORNER SECTION 26
 MARK STONE WITH + ON TOP
 T. 13 N., R. 68 W., 6th RM.
 LARAMIE COUNTY, WYOMING

'87 JUN 9 PM 2 17

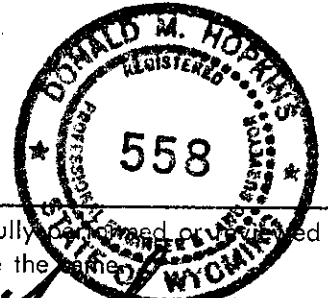
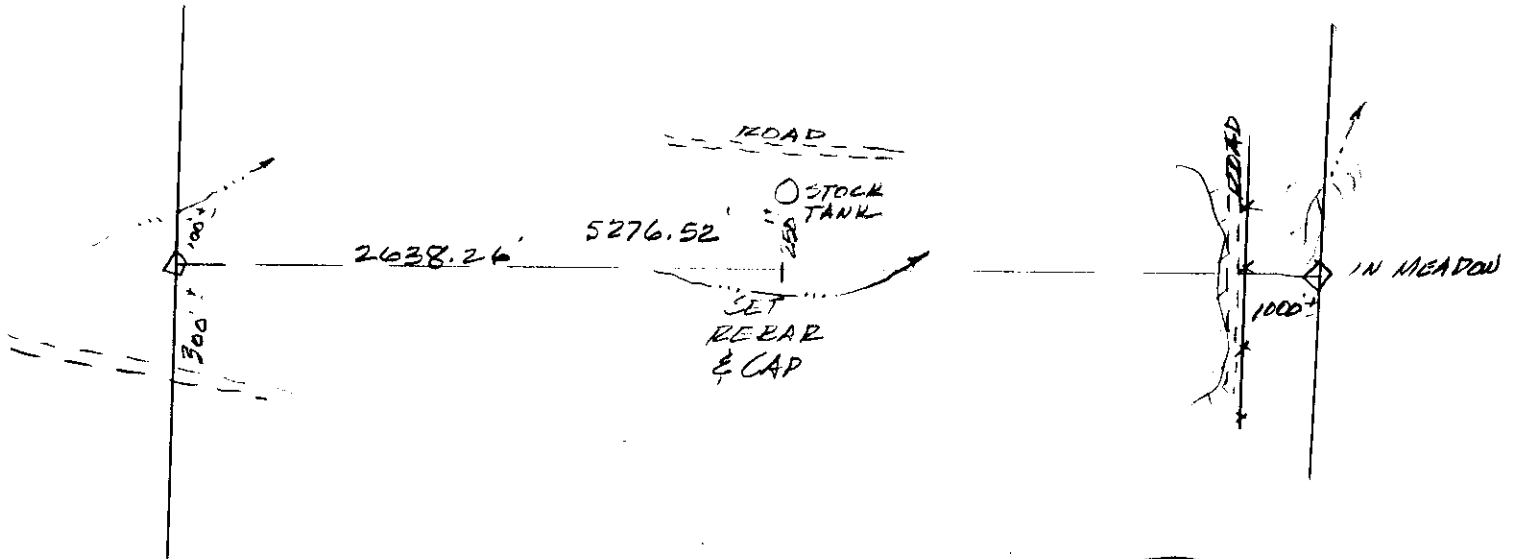
REGISTERED
 LARAMIE COUNTY
 CHEYENNE, WY.

029751

DESCRIPTION OF MONUMENT AND ACCESSORIES ESTABLISHED
 TO PERPETUATE THE ORIGINAL LOCATION OF THIS CORNER:

DISTANCE TO E 1/4 CORNER
 5276.52 FEET
 SET POINT 2638.26 FEET EAST

SKETCH, WITH COURSE AND DISTANCE TO ADJACENT CORNER IF DETERMINED IN THIS SURVEY.
 (May Sketch or Paste Reproduction on Reverse Side.)



I, DONALD M. HOPKINS certify that I have carefully examined and approved the work done on the diagrammed corner as reported on this recordation form and approve the same.

Donald M. Hopkins 558
 Signature of Surveyor Registration No.

STATE OF WYOMING,
 Office of Clerk and Recorder,
 County of Laramie

This "corner record" was filed for record on the 9th day of June, 1987, was noted on the cross-index plat and is assigned page No. _____, in book No. _____.

James C. Whitehead
 County Official
 Cross Index No. T-17 T. 13 R. 68 Mer.
 _____ T. _____ R. _____ Mer.
 _____ T. _____ R. _____ Mer.
 _____ T. _____ R. _____ Mer.
 _____ T. _____ R. _____ Mer.
 _____ T. _____ R. _____ Mer.
 _____ T. _____ R. _____ Mer.